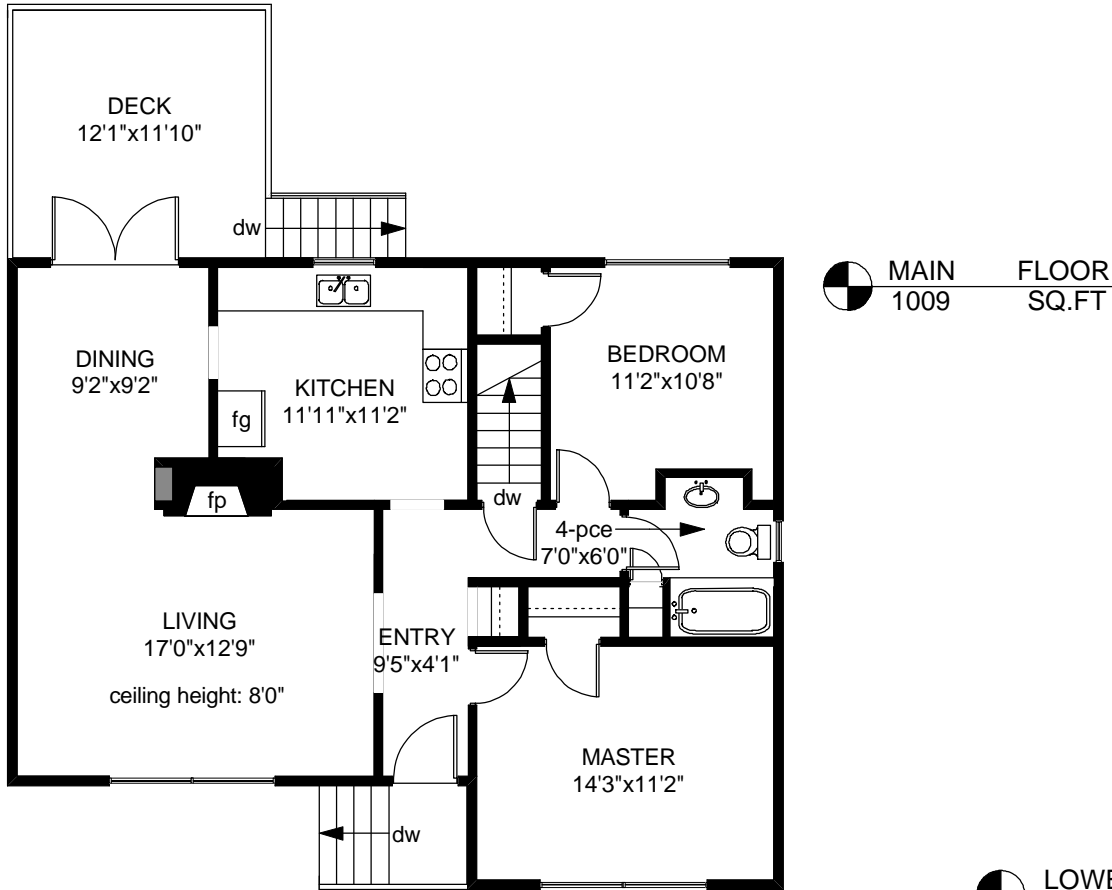
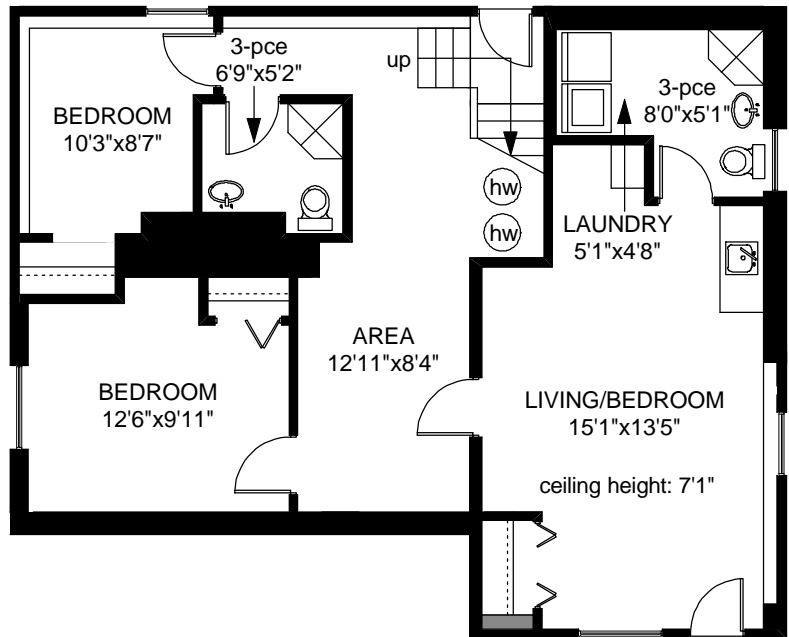
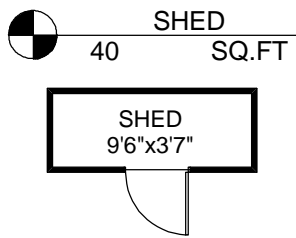


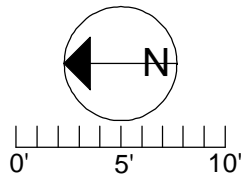
3221 CARMAN STREET



LOWER FLOOR
1009 SQ.FT



	FINISHED SQ. FT.	UNFINISHED SQ. FT.	TOTAL SQ. FT.
MAIN	1009	0	1009
LOWER	1009	0	1009
TOTAL	2018	0	2018
DECK	0	149	149
SHED	0	40	40



PREPARED FOR THE EXCLUSIVE USE OF
WENDY MORETON OF NEWPORT REALTY

MEASURED ON: 02/19/10
DRAWING FILE: 07984

Tafemeasure VICTORIA, B.C.
Ph. 883.8894
www.tafemeasure.com

NOTE: This floor plan is provided by Newport Realty Ltd. as a convenient reference only, and is not to be relied upon as accurate. Prospective Buyers must satisfy themselves not only of the actual measurements, but also to the status of any finished space shown on this floor plan, specifically in relation to minimum ceiling height for habitable rooms required by the BC Building Code, allowable finished floor area in relation to current zoning, and determination if space was developed with necessary municipal permits.