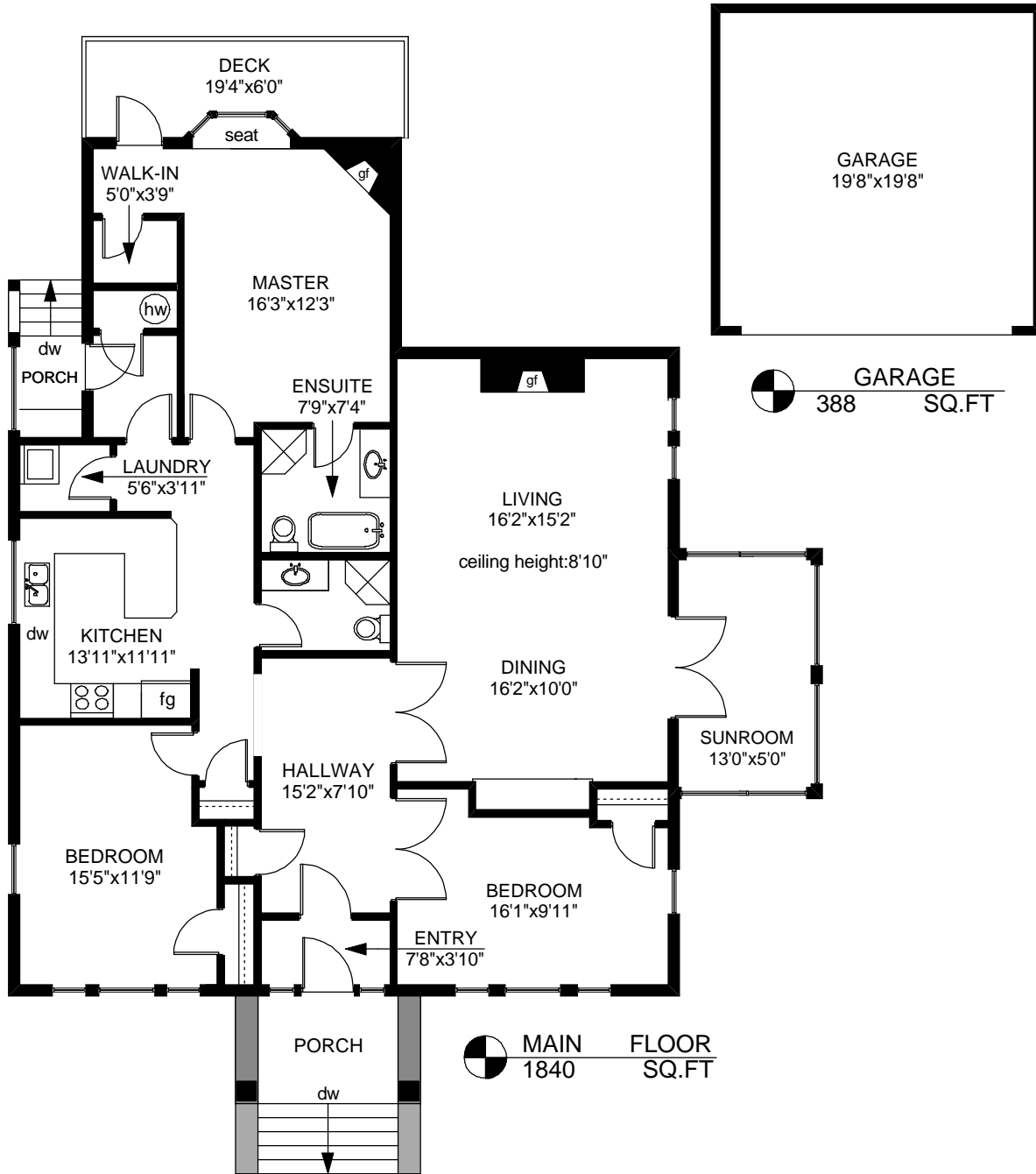
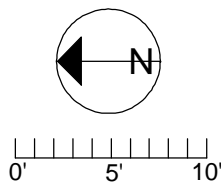


# 1-753 PEMBERTON ROAD



	FINISHED SQ. FT.	UNFINISHED SQ. FT.	TOTAL SQ. FT.
MAIN	1840	0	1840
TOTAL	1840	0	1840
GARAGE	0	388	388
DECK	0	97	97
PORCHES	0	107	107



PREPARED FOR THE EXCLUSIVE USE OF  
MARC OWEN-FLOOD, NEWPORT REALTY Ltd.

MEASURED ON: 09/04/08  
DRAWING FILE: 06603

Tafe Measure VICTORIA, B.C.  
Ph. 883.8894  
www.tafemeasure.com

NOTE: This floor plan is provided by Marc Owen-Flood, Newport Realty Ltd. as a convenient reference only, and is not to be relied upon as accurate. Prospective Buyers must satisfy themselves not only of the actual measurements, but also to the status of any finished space shown on this floor plan, specifically in relation to minimum ceiling height for habitable rooms required by the BC Building Code, allowable finished floor area in relation to current zoning, and determination if space was developed with necessary municipal permits.