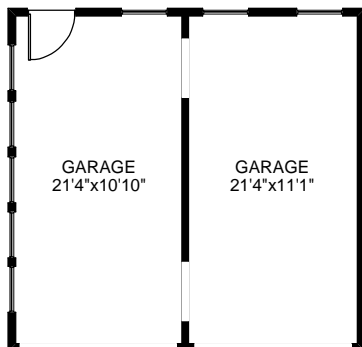
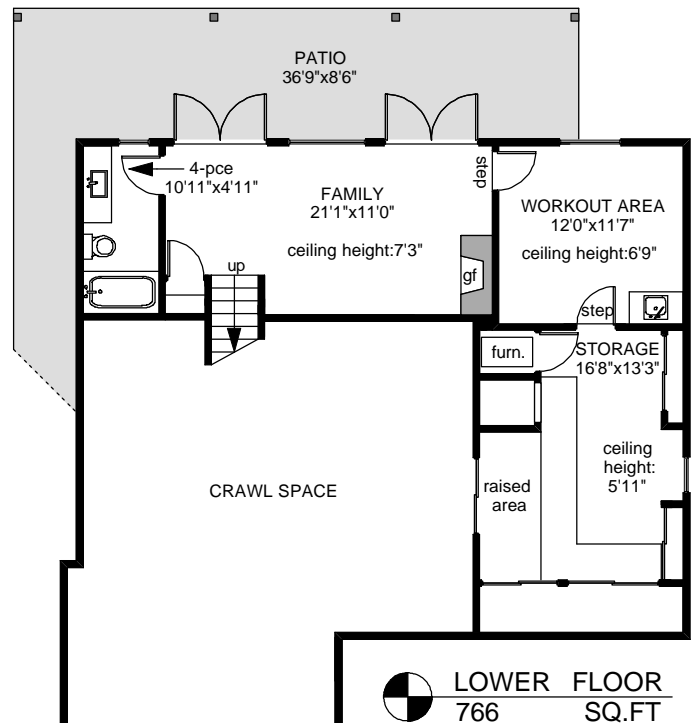
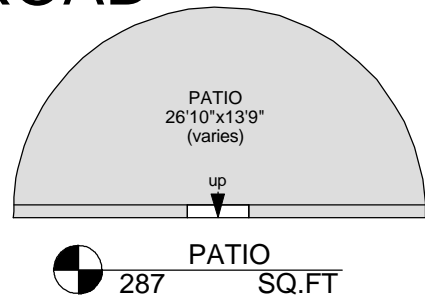
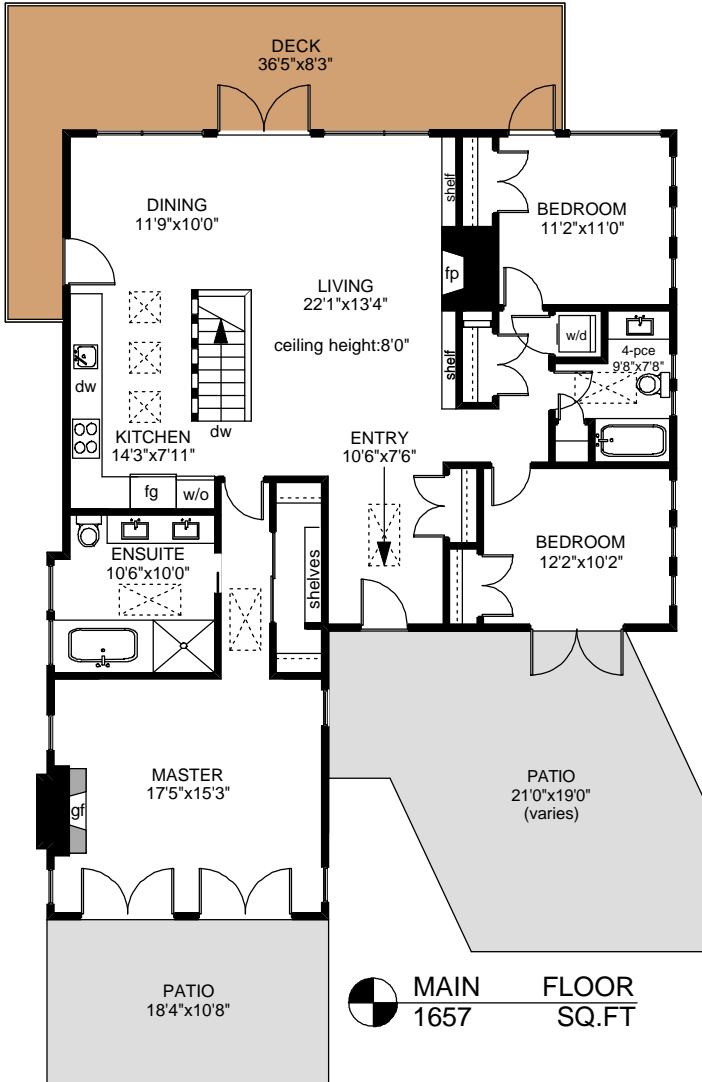
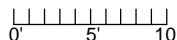


3000 SPRING BAY ROAD



	FINISHED SQ. FT.	UNFINISHED SQ. FT.	TOTAL SQ. FT.
MAIN	1657	0	1657
LOWER	766	0	766
TOTAL	2423	0	2423
GARAGE	0	519	519
DECK	0	347	347
PATIOS	0	1205	1205



PREPARED FOR THE EXCLUSIVE USE OF
MARC OWEN-FLOOD, NEWPORT REALTY Ltd.

MEASURED ON: 09/17/09
DRAWING FILE: 07608

Tafe Measure VICTORIA, B.C.
Ph. 883.8894
www.tafemeasure.com

NOTE: This floor plan is provided by Marc Owen-Flood, Newport Realty Ltd. as a convenient reference only, and is not to be relied upon as accurate. Prospective Buyers must satisfy themselves not only of the actual measurements, but also to the status of any finished space shown on this floor plan, specifically in relation to minimum ceiling height for habitable rooms required by the BC Building Code, allowable finished floor area in relation to current zoning, and determination if space was developed with necessary municipal permits.