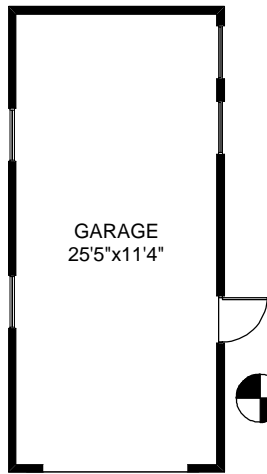
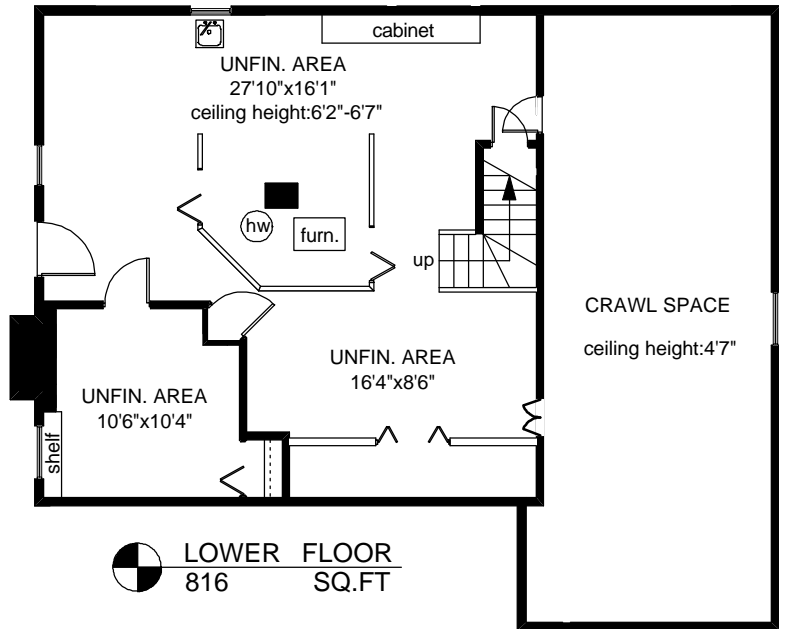
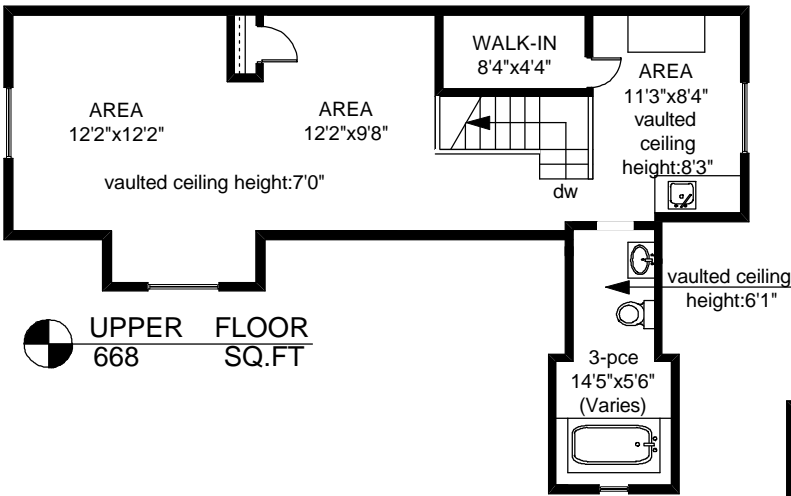
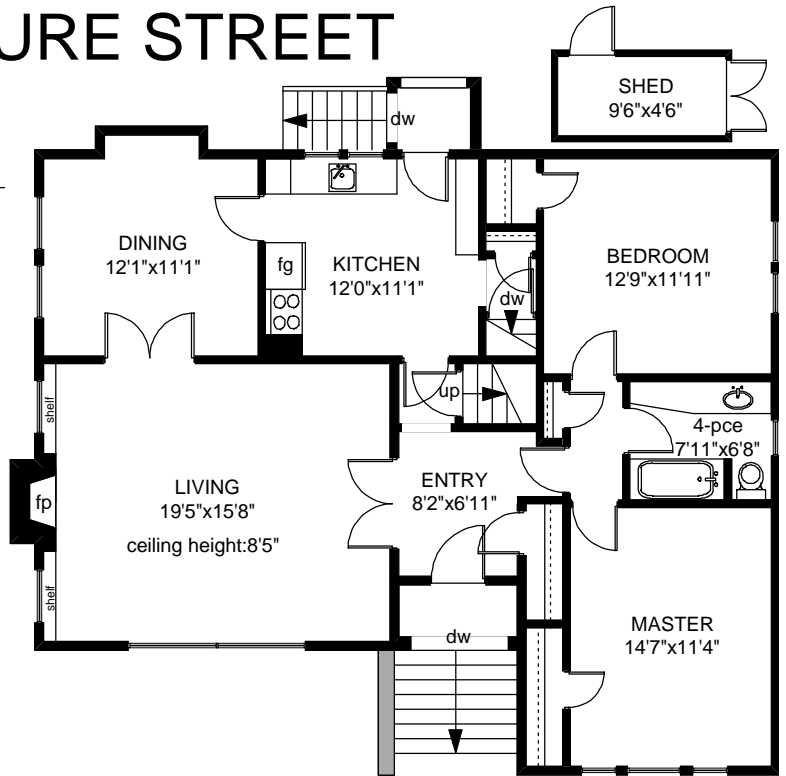


1144 MCCLURE STREET

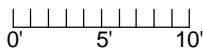
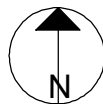


MAIN FLOOR
1281 SQ.FT

GARAGE
319 SQ.FT



	FINISHED SQ. FT.	UNFINISHED SQ. FT.	TOTAL SQ. FT.
MAIN	1281	0	1281
UPPER	668	0	668
LOWER	0	816	816
TOTAL	1949	816	2765
GARAGE	0	319	319
SHED	0	52	52



PREPARED FOR THE EXCLUSIVE USE OF
TADDY OWEN-FLOOD Ltd.

MEASURED ON: 05/29/09
DRAWING FILE: 07274

Tafemeasure VICTORIA, B.C.
Ph. 883.8894
www.tafemeasure.com

NOTE: This floor plan is provided by Taddy Owen-Flood Ltd. as a convenient reference only, and is not to be relied upon as accurate. Prospective Buyers must satisfy themselves not only of the actual measurements, but also to the status of any finished space shown on this floor plan, specifically in relation to minimum ceiling height for habitable rooms required by the BC Building Code, allowable finished floor area in relation to current zoning, and determination if space was developed with necessary municipal permits.