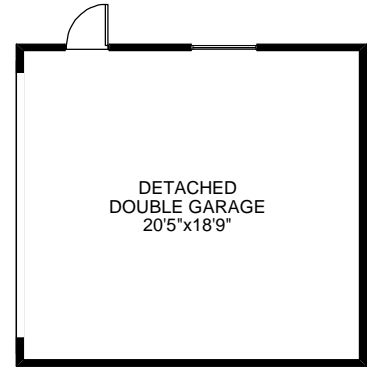
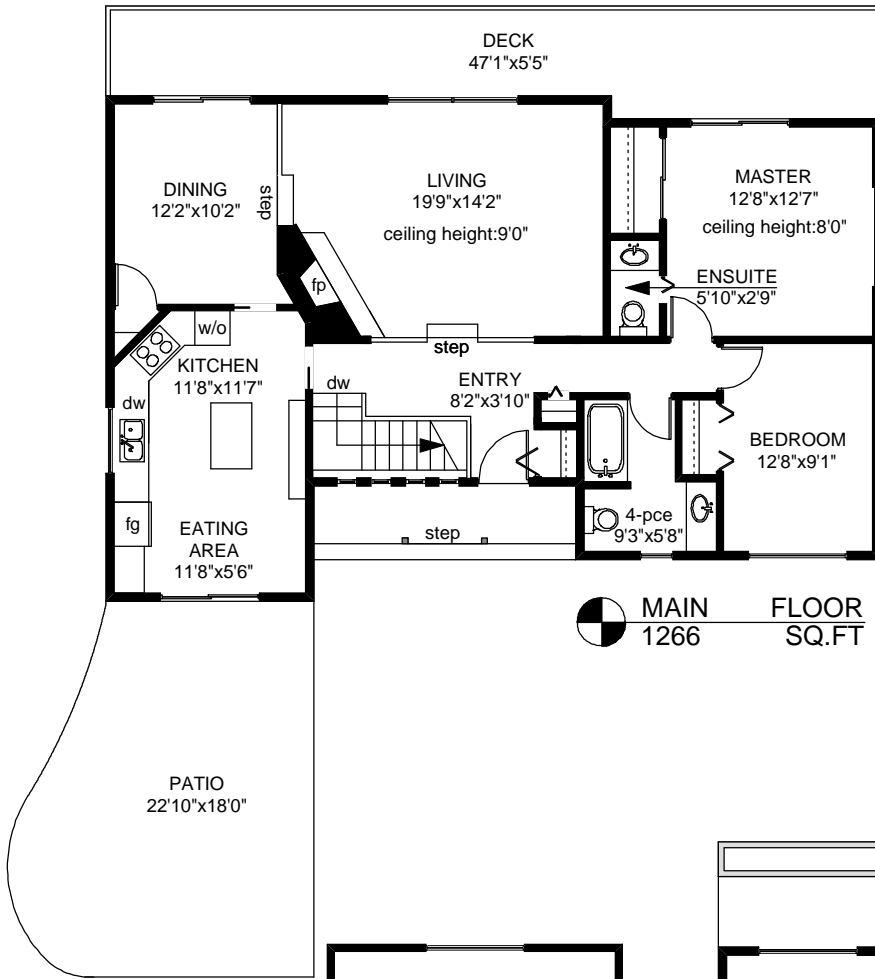
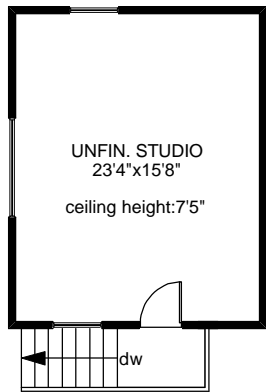


# 7076 MABER ROAD



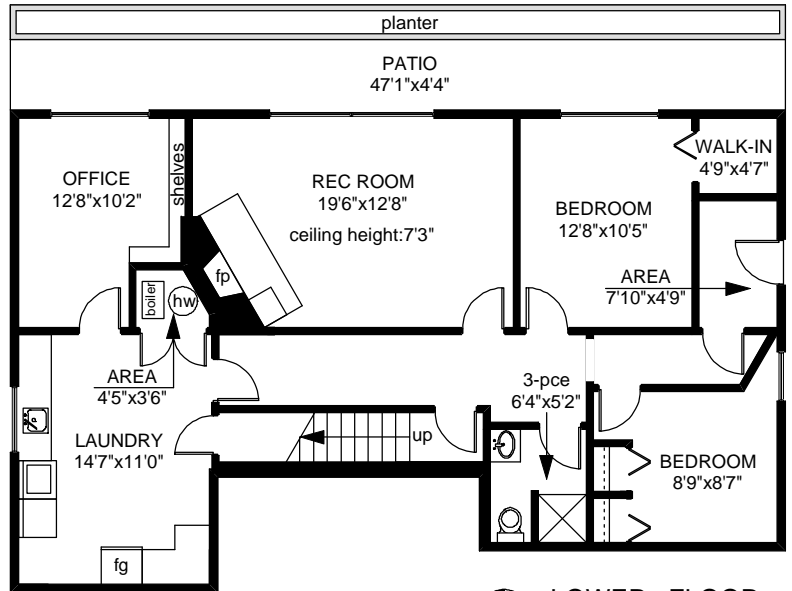
**GARAGE**  
416 SQ.FT



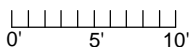
**STUDIO/WORKSHOP (UPPER)**  
306 SQ.FT



**STUDIO/WORKSHOP (LOWER)**  
648 SQ.FT



	FINISHED SQ. FT.	UNFINISHED SQ. FT.	TOTAL SQ. FT.
MAIN	1266	0	1266
LOWER	1222	0	1222
<b>TOTAL</b>	<b>2488</b>	<b>0</b>	<b>2488</b>
GARAGE	0	416	416
DECK	0	280	280
PATIOS	0	572	572
STUDIO/WORKSHOP	0	954	954



PREPARED FOR THE EXCLUSIVE USE OF  
KEVIN WENSLEY OF  
CORNERSTONE PROPERTIES Ltd.

MEASURED ON: 01/26/10  
DRAWING FILE: 07886

**Taf** VICTORIA, B.C.  
Measure Ph. 883.8894  
www.tafmeasure.com